

Enhancing and Accelerating Routing Security (EARS)

Parsons Corp.

Dragon Research Labs | Raytheon BBN Technologies

<http://securerouting.net>

For more information contact:

Sandra Murphy
7110 Samuel Morse Dr
Columbia MD 21046
Tel: 443.430.8000
sandra.murphy@parsons.com

Russ Mundy
7110 Samuel Morse Dr
Columbia MD 21046
Tel: 443.430.8000
russ.mundy@parsons.com

Resources for Routing Security

Tools for Certification

RPKI.NET

An RPKI engine and a GUI for use by users of the 'delegated' model and for users who want to run their own CA.

RPKIViz

A tool intended for any resource holder, which will display the status of authorization relationships represented in the global RPKI objects.

MapResources

A tool to help an organization build an inventory of its routing-related resources.

Tools for Validation

RPKI.NET and RPSTIR

Implementations of the validation functions and rpkirtr protocol, to feed the data to routers doing RPKI-based origin validation

BGPSEC in BIRD

Implementation of path validation capability in a popular software router implementation.

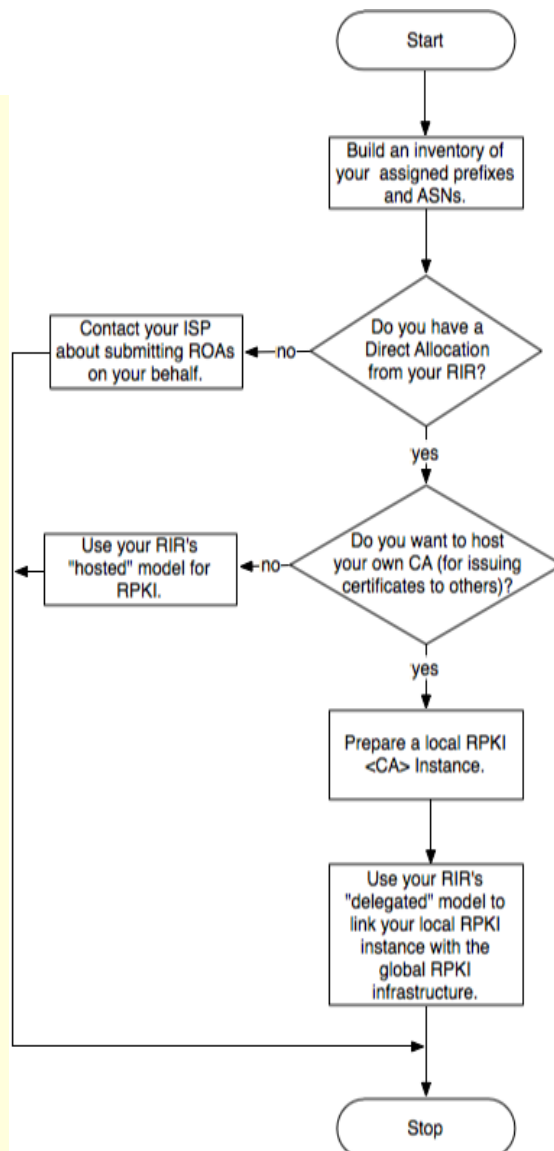
RPKI Monitor

A tool for monitoring the status of the local use of RPKI information in ongoing network operations.

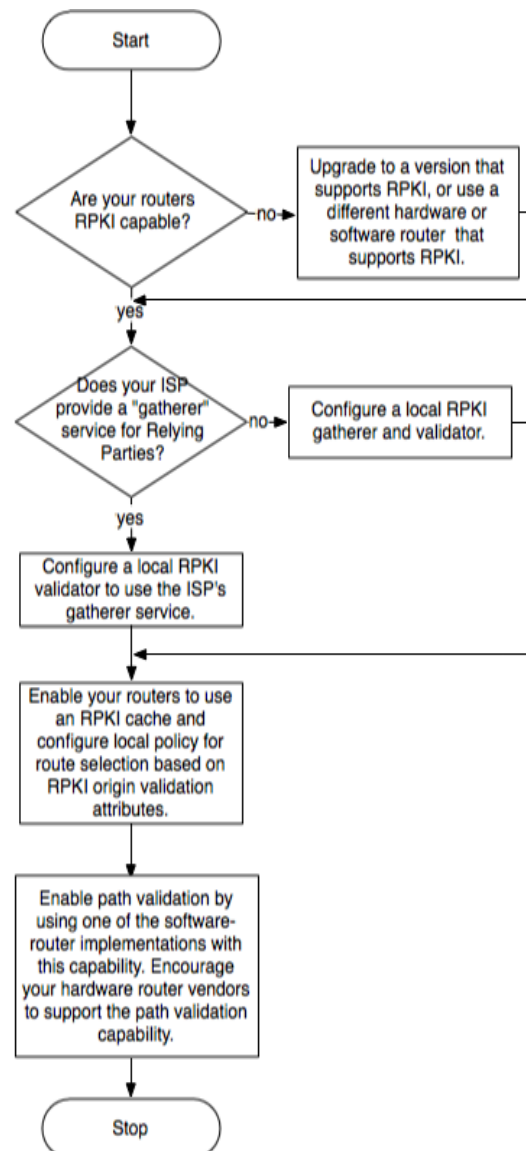
EOM - Emulation and Monitoring

A tool to analyze the impact of RPKI validation without modifying actual routing.

Process Guide For Certification



Process Guide For Validation



This work was sponsored by The Department of Homeland Security, Science and Technology Directorate.